

Mayer • Reverb

Gr B



**Aquatic** (F421-024)



**Caribbean** (F421-013)



**Charcoal** (F421-006)



**Delft** (F421-014)



**Garnet** (F421-001)



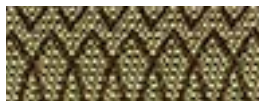
**Granite** (F421-000)



**Marine** (F421-004)



**Mellow** (F421-002)



**Pistachio** (F421-003)



**Powder Blue** (F421-034)



**Tangelo** (F421-009)



**Taupe** (F421-007)



**Violet** (F421-005)

### Specifications

#### Content

48% pre-consumer recycled, 52% repreve post-consumer recycled polyester

#### Repeat

H: 0.375"

V: 1.875"

#### Width

54 in.

#### Weight

9.3 oz.

#### Cutting Direction

NR - Non-railroaded

#### Cleaning Code

W-S: Water-based cleaning agents and foam or mild, water-free solvents may be used for cleaning this fabric.

### Performance

- Greenguard Certification : Gold
- Colorfastness Wet : 3
- Colorfastness Dry : 4
- Passes NFPA 260/UFAC Class 1
- Cal 117-2013
- ASTM E84 Class 1 or A (Unadhered)
- Tensile Strength Weft : 180
- Tensile Strength Warp : 250
- Seam Slippage Weft : 50
- Seam Slippage Warp : 70
- Green Certification: Facts Silver
- UL Recognized

The colors on this card are digital representations. Please refer to an actual sample before finalizing your selection.